



**riteCOA**

# Accelerate your Business Growth by Automating Financial Consolidation



If you are the one who is looking for the best tool which:

**1** Is Perfect for financial analysis

**3** Maintains balance sheets effectively

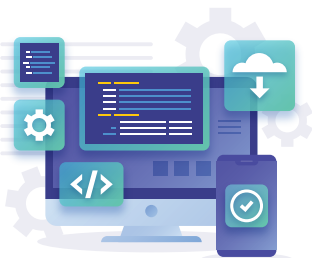
**2** Makes stress-free Trial Balance mapping

**4** Automates financial operations eliminating recurring processes



**RiteCOA is here for you, making your robust financial & reporting processes easier & smarter!**

**You have simplified Financial Planning & Reporting Analysis at your fingertips!**



**RiteCOA is an advanced timesaving tool that converts Trial balance from one format to another based on the mapping provided/defined by the business users.**

## How will RiteCOA Generate the Balance Sheets as Required?

Once defining the source, target structures and completing mapping values between the source and target systems, the tool is ready for conversion. The tool seamlessly transforms the Trial Balances from one format to another during data migration.

### Know how RiteCOA ensures robust capabilities that match your business considerations?

- ▶ Consolidates the global chart of account structure when multiple ERP systems run in a company.
- ▶ Act as a 'What-If' analysis tool to see how the future Trial balance will look when the company embarks on the financial transformation journey. No need to wait till implementation completes.

### Why Choose RiteCOA?

- ▶ Empowering end users without technical support/knowledge
- ▶ Eliminates manual work during the data migration
- ▶ System driven and Structured approach
- ▶ Provides the analysis/visibility of how the future financial reporting will look before the start of implementation
- ▶ Cost-effective compared to consolidation tools in the market such as Oracle FCCS, Hyperion, etc

## Designed mainly for efficient finance management to avoid repetitive fundamental tasks with timesaving features

- ▶ Ready-to-use tool & no implementation is required.
- ▶ Significant cost savings compared to Oracle Financial Consolidation and Close Cloud (FCCS)
- ▶ Built-in adaptors for Oracle E-Business Suite (EBS) 11i, R12.X.X, and Oracle ERP Cloud
- ▶ Common templates for all Enterprise Resource Planning (ERPs)
- ▶ Extensive mapping options like 1-1, 1-2,1-3, and 2-1,2-3 are available
- ▶ Realtime synchronization of chart of account values from Oracle E-Business Suite (EBS) and Oracle ERP Cloud

**Is it convincing? Then, you are always on time to start your financial transformation journey with RiteCOA**

**Request  
for a Demo**



**GET IN TOUCH** ▶

**Global Head Quarters (US)**

16000 Park Ten Place, Suite 702, Houston, TX - 77084  
+1 281203 3055 sales@ritesoftware.com

**Offshore Development Center (India)**

ACE Tech Park, Financial District, Nanakaramguda,  
Hyderabad, Telangana - 500032